

Cloverbuds

Summer Adventures
Cloverbud Mornings:

Let's Go to the Fair will be held on:
Saturday, July 9th from 9-11 am
at the Marquette County Fair!
Meet in front of the **4-H Exhibit Building**
to begin the fun!

"4-H Led Library Programs"

Endeavor Library
July 5th at 1:00 pm

Oxford Library
July 6th at 2:00 pm

Oxford Library
July 15th & July 20th at 2:00pm

Montello Library
July 26th at 11:00am

Montello Library
August 16th at 2:00pm
Endeavor Library
August 9th at 1:00pm

Extension Marquette County

480 Underwood Avenue, PO Box 338
Montello, WI 53949

Phone: 608-297-3141, Fax: 608-297-9161

Office Hours: 8:00 AM-4:30 PM Monday-Friday

Website: <https://marquette.extension.wisc.edu/>



Pat Wagner
Area 14 Director
patricia.wagner@wisc.edu

Hannah Zellmer
Human Development &
Relationships
hannah.zellmer@wisc.edu

Vacant
FoodWise Coordinator

Christa Van Treeck
4-H Youth Development
christa.vantreeck@wisc.edu

Natasha Paris
Agriculture
natasha.paris@wisc.edu

Janet Pautzke
4-H Program Associate
jpautzke@wisc.edu

Jackie Stoneman
Administrative Assistant
jackie.stoneman@wisc.edu

Extension extends the knowledge and resources of the University of Wisconsin to people where they live
And work. An EEO/Affirmative Action employer, University of Wisconsin-Extension provides equal



Marquette County 4-H Family Newsletter

July-August, 2022

IMPORTANT DATES

July

4 UW-Extension Office closed
7-10 Marquette County Fair, Westfield
10 Parade of Champions, 12pm, Westfield Fairgrounds
19 Westfield Library Program, 10am
20 Marquette County Teen Court, Montello
20 Oxford Library Program, 3:00pm
28 Fair Board meeting, 7pm, Services Center, Montello

August

4-14 Wisconsin State Fair, West Allis
17 Teen Court, Services Center, Montello
25 Fair Board meeting, 7pm, Services Center, Montello



Hi Everyone! My name is Lily Jensen and I am the Marquette County UW-Extension Youth Development Summer Intern.

I am going to be a senior at UW-Platteville studying Agribusiness with an emphasis in Commodity and Price Analysis.

I grew up on a small Hereford and Maine Anjou cow/calf operation and have exhibited livestock at the County, State, and National levels.

I am very involved in 4-H still along with being one of the Livestock Superintendents at the Waushara County Fair.

This summer, I plan to learn more about the roles of Extension in the community and hopefully plan some fun activities for the youth of this county.

Calling All Creative, Artistic, and Crafty Youth!



Entries are open for Youth Exhibits at the **Wisconsin State Fair**. Youth from Wisconsin, ages 12-19 as of January 1st of the current fair year, may enter projects for judging and exhibition.

The Youth Exhibits competition features the following divisions:

- ☐ Arts & Crafts
- ☐ Mechanical Sciences, Woodworking & Natural Resources
- ☐ Photography, Black and White
- ☐ Photography, Color
- ☐ Textiles & Home Furnishing

Entry Deadline: Monday, July 25 – 5 pm Central Standard Time

New for 2022 - County Fair Judge's Favorite award: The Judge's Favorite award is given to County Fair project exhibits of outstanding quality. Judge's Favorite award-winners are eligible to advance to Wisconsin State Fair with no entry fees.

Projects no longer need to be exhibited or selected at a Wisconsin County Fair/District Fair. Review the [entry information](#) or submit your nominations [here](#).

4-H at Home

4-H at Home – Get Free Activities to Spark Curiosity in Your Kids.

The hands-on educational resources, 4-H is known for, are now available at home! Whether you're a 4-H club leader, 4-H member, a virtual learner, a homeschooler or just looking for some quick and fun activities to take your interests to the next level, 4-H at Home has something for everyone.

Sign up to download any (or all!) of our 4-H at Home Activity Guides for over 150 fun, hands-on, educational activities for kids of all ages. Learn how to save and pay for college, bake delicious holiday cookies, cook healthy meals, harness the power of mindfulness, and more! These fun, educational activities help your child learn valuable skills and gain experiences that will encourage them to continue learning and doing all year long.

<https://4-h.org/about/4-h-at-home/activity-guides/>.

Space Exploration

Humans aren't ready to explore the farthest reaches of space just yet, but we're getting closer. In these activities, students will join astronaut Isabella Hernandez in interactive videos and learn how to grow food in space, how to operate a lunar terrain vehicle, and see firsthand what it takes to live and work among the stars. <https://4-h.org/about/4-h-at-home/space-exploration/>.

Marquette County Fair July 7-10, 2022 THEME: "CHRISTMAS IN JULY!"



2022 4-H Food Stand Schedule

Marquette County 4-H events are funded through the income generated at the 4-H Food Stand. Each 4-H member/family is asked to work at least one shift during the fair. If you are not able to work during your club's assigned shift....please make arrangements to work when you are available.

THURSDAY, JULY 7

10:00a.m. - 12:30p.m.
12:00p.m. - 3:00p.m.
2:30p.m. - 5:30p.m.
5:00p.m. - 8:00p.m.
7:30p.m. - 10:00p.m.

Springfield Fun Runners
Springfield Fun Runners
Springfield Fun Runners
Springfield Fun Runners
Springfield Fun Runners

FRIDAY, JULY 8

10:00a.m. – 2:30p.m.
2:30p.m. – 7:00p.m.
7:00p.m. - 11:00p.m.

Douglas Doers
Douglas Doers
Douglas Doers

SATURDAY, JULY 9

10:00a.m. – 1:00p.m.
1:00p.m. – 4:00p.m.
4:00p.m. – 7:00p.m.
7:00p.m. - 11:00p.m.

Badger
Badger
Badger
Badger

SUNDAY, JULY 10

10:00a.m. – 12:00p.m.
12:00p.m. – 2:00p.m.

Russell Flats
Briggsville Fire Dept.



2022 Marquette County Fair Schedule

Thursday, July 7

10:00am Jr. & Open Rabbit Show
 12:00pm Jr. Poultry Showmanship
 5:30pm Sheep, Goat & Swine Show
 6:00pm Nick's Kids Show - Exhibit Bldg.
 8:00-11:00pm Live Band - Madison County

Friday, July 8

9:00am Beef Show
 10:00-11:30am Lumberjack Show
 12:30-2:00pm Lumberjack Show
 1:00pm Nick's Kids Show - Exhibit Bldg.
 2:00-8:00pm Escape Room
 3:30-5:00pm Lumberjack Show
 4:00pm Nick's Kids Show
 5:00-8:00pm Live Band - Best Practice
 5:30pm Meat Animal Auction Buyers Dinner
 6:00pm Nick's Kids Show
 6:30pm Meat Animal Auction
 8:00pm Bull Riding Blowout

Saturday, July 9

9:00am Dairy Show
 9:00am Horse Show
 9:00am Cloverbud Morning - Exhibit Bldg.
 10:00-11:30am Lumberjack Show
 12:00pm Mighty Mites Showmanship
 12:30-2:00pm Lumberjack Show
 2:00pm Nick's Kids Show - Exhibit Bldg.
 2:00-8:00pm Escape Room

Saturday, July 9

2:30pm Dog Show in Highway Bldg.
 3:30-5:00pm Lumberjack Show
 4:00pm Nicks Kids Show - Exhibit Bldg.
 6:00pm Nicks Kids Show - Exhibit Bldg.
 6:30pm Tractor Pulls
 7:00-11:00pm DJ Express

Sunday, July 10

10:00-11:30am Lumberjack Show
 10:00am-4:00pm Escape Room
 11:00am Kids Pedal Pull - Highway Bldg.
 12:00pm Parade of Champions - Exhibit Bldg.
 12:00-3pm Polka Band
 12:30-2pm Lumberjack Show
 1:00-3:00pm - Bingo - Highway Bldg.
 2:30-4:00pm - Lumberjack Show

For more information visit the fair website: <http://www.marquettecountyfairwi.org/>.



4-H Record Books/Secretary Books Due September 1st

Why do we ask EVERY member to fill out a record book? What do you get out of them? Why do the 4-H Leaders want to see them? Your 4-H record book is a great way for you to show others what you were able to accomplish throughout the past year.



Maybe you don't think you really accomplished anything, but what about learning how to show a pig for the first time, sewing an entire project without ripping out a single seam, or participating in Dog Training. Even though it may not seem like a huge accomplishment to you, it is still something that you should be proud of. Record books are also the way that the 4-H Leaders Association uses to recognize 4-H members. They also are a great reference for the future.

Record Book pages will be available **AFTER** July 1st on the UW- Extension website, under 4-H & Forms:
<https://marquette.extension.wisc.edu/>.

2022 EAA Quilt Show

Please join us for the 32nd annual EAA Quilt Show held at the Oshkosh Senior Center South. Bed-size, lap and baby quilts along with challenge quilts will be on display. A quilters' marketplace will include vendors and a boutique of handmade items. A highlight of the show will be bed turnings at 10am and 2pm. Everyone receives a "Thank You" gift for attending, a raffle will be held for a queen-size quilt, and a scavenger hunt will be available for those who want to participate. Admission and parking are free.

- Presented By: Lakeside Quilters Guild
- Date: July 28, 2022
- Location: [Oshkosh Senior Center South](#)
- Address: 200 N Campbell Rd, Oshkosh, WI 54901
- Phone: [\(920\) 428-6947](tel:9204286947)
- Time: 8:00 AM to 4:00 PM
- Price: Free Admission

For more information, visit website: <http://oshkoshquilters.org/>.



State 4-H Dog Obedience and Showmanship Show



The 2022 Wisconsin 4-H Dog Show will be hosted by Dane County & Portage County at the Jefferson County Fairgrounds on Sept. 30, Oct. 1, and Oct. 2. More information will be coming soon.

Please visit:
<http://fyi.uwex.edu/wi4haganimalscience/state-4-h-agility-show>
for more information.

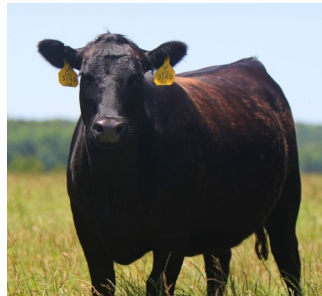
World Beef Expo September 22-25, 2022

2022 Collegiate & Youth Judging Contest

MARK YOUR CALENDARS!

World Beef Expo is excited to announce that we will again be hosting a **Collegiate and Youth Livestock Judging Contest at the 2022 World Beef Expo** in September in West Allis, WI.

We would like to invite you to bring your team or attend as an individual to compete. **Blackhawk East will be assisting with the competition.**



DIVISIONS

- 1 - Jr. Novice Judging Division (8th Grade and lower)
- 2 - Sr. Novice Judging Division (Freshman through Senior in High School)
- 3 - Jr. College Freshman Judging Division (College Freshman)
- 4 - Jr. College Sophomore Judging Division (College Sophomore)
- 5 - Sr. College Judging Division (College Upperclassman)

\$30 per person to enter

?New this year!? All college individuals and teams need to be registered and paid prior to the event.

Questions or want to register now?

Contact us at: info@worldbeefexpo.com or call 920-479-0658. Checks or credit cards accepted.

Wisconsin Sheep & Wool Festival



The Wisconsin Sheep and Wool Festival will be held September 9-11, 2022 at Jefferson County Fair Park located at 503 N. Jackson Avenue in Jefferson.

This is a wonderful event for sheep producers, youth sheep project members, and consumers of the sheep product of meat, wool, and cheese.

The complete program can be viewed at: <https://wisconsinsheepandwoolfestival.com/>.

2022 Wisconsin Dairy Breakfasts

Wisconsin dairy breakfasts are being planned to celebrate June Dairy Month. Agri-View will publish a calendar weekly in print, as well as online, with updates as we receive them. Email agriview@madison.com with breakfast information including time and date, location with street address, what will be included, and a contact website, email or phone number to learn more information. Visit bit.ly/2022dairy to see an interactive map.

Waushara County June Dairy Breakfast

The event will be held June 26 at Flyte Family Farm, W13450 Cottonville Ave., Coloma, Wisconsin. Visit www.facebook.com/WausharaCountyJuneDairyBreakfast/ for more information.

2022 State 4-H Horse Expo

The State 4-H Horse Expo will be September 16-18, 2022 and will be held at the Wisconsin State Fair Park in West Allis.

Exhibiting in the State 4-H Horse Show is open to any eligible 4-H horse project member in grades 6-13, who has been approved by a University Extension Agent in their county and by the project leader. They must be a 4-H member in good standing. One class entry **MUST** be a class in which the exhibitor won a blue ribbon at the county qualifying show.

For more information please visit:

<https://4h.extension.wisc.edu/opportunities/projects/large-animals/horse-project/wisconsin-4-h-horse-association/>.

