

## Premier Exhibitor at Wisconsin State Fair

During the youth livestock time at state fair, there are contests for youth. Youth can test their knowledge of livestock through taking a written quiz, skillathon stations (identifying breeds, equipment, etc.), judging animals, a short industry interview and showmanship.

Four of these events are added together for prizes and monetary awards for the top youth in each of the species areas.

Check for more details coming out through our social media channels and state fair's website at:

<http://wistatefair.com/competitions/junior-livestock/>.

### Marquette County UW Extension

480 Underwood Avenue, PO Box 338

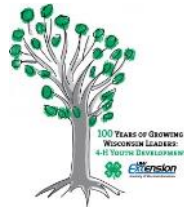
Montello, WI 53949

Phone: 608-297-3141, Fax: 608-297-9161

Office Hours: 8:00 AM-4:30 PM

Monday-Friday

Website: <http://marquette.uwex.edu/>



#### Christa Van Treeck

4-H Youth Development

[christa.vantreeck@ces.uwex.edu](mailto:christa.vantreeck@ces.uwex.edu)

#### Sue Allen

Family Living

[susan.allen@ces.uwex.edu](mailto:susan.allen@ces.uwex.edu)

#### Cara Cross

Wisconsin Nutrition Education Program

[cara.cross@ces.uwex.edu](mailto:cara.cross@ces.uwex.edu)

#### Martin Havlovic

Community Resource Development

[martin.havlovic@ces.uwex.edu](mailto:martin.havlovic@ces.uwex.edu)

#### Lyssa Seefeldt

Agriculture

[lyssa.seefeldt@ces.uwex.edu](mailto:lyssa.seefeldt@ces.uwex.edu)

#### Jackie Stoneman

Support Staff

[jackie.stoneman@ces.uwex.edu](mailto:jackie.stoneman@ces.uwex.edu)

#### Nadine Klapoetke

Support Staff

[nklapoetke@co.marquette.wi.us](mailto:nklapoetke@co.marquette.wi.us)

UW Extension extends the knowledge and resources of the University of Wisconsin to people where they live and work. An EEO/Affirmative Action employer, University of Wisconsin-Extension provides equal opportunities in employment and programming, including Title IX and ADA requirements.

# CLOVER CONNECTION

Marquette County 4-H Family Newsletter

July-August, 2016

## IMPORTANT DATES

### July

- 1 Deadline for fair entry changes
- 4 UW-Extension Office closed
- 6 Clothing Revue, after clothing judging, Exhibit Building
- 7-10 Marquette County Fair, Westfield
- 10 Parade of Champions, 12pm, Fairgrounds
- 15 Movie on the Courthouse Lawn, Montello
- 22 Lego Program at Endeavor Library, 2pm
- 27 Marquette County Teen Court, Montello
- 28 Fair Board meeting, 7pm, Services Center, Montello

### August

- 4-14 Wisconsin State Fair, West Allis
- 19 Movie on the Courthouse Lawn, Montello
- 24 Marquette County Teen Court, Montello
- 25 Fair Board meeting, 7pm, Services Center, Montello



Hi, my name is Lindsay Lechner and I am the Marquette County UW-Extension Summer Intern. I also am a current student at the University of Wisconsin- Stevens Point where I am continuing to pursue my degrees in Elementary Education and Spanish.

I have been keeping busy at the Extension office with many things this summer, including 4-H camp, movies on the courthouse lawn, butter demonstrations at Dairylicious Days and the Dairy Breakfast, library programming and much more.

I also am looking forward to everything else that is coming up this summer and hope to see many of you at the fair!

## 4th Annual Marquette County Courthouse Lawn Outdoor Theatre

Looking for a fun, free activity to do with your family? Come to the 4th Annual Marquette County Courthouse Lawn Outdoor Theatre on July 15th. This event is hosted by Marquette County UW-Extension 4-H Youth Development and will be offering one more in August. The second outdoor theatre event will be on Friday, July 15th and will be showing, the *Minions*. Unable to make it to this showing? No problem!



Marquette County UW-Extension will be hosting one more outdoor theatre event this summer. The last showing will be on August 19th, with the showing of *Alvin and the Chipmunks: Road Chip*. Movies will be shown on the lawn of the courthouse in Montello and will start at dusk (approximately 8:15pm). So grab your lawn chairs, load up the kids and head on over to the courthouse to enjoy a night of free entertainment and great company.

## 4-H Clubs to Create Newest Cedar Crest Ice Cream Flavor

Cedar Crest Ice Cream of Cedarburg, Wisconsin, and the Wisconsin 4-H Foundation announce a contest to create the next Cedar Crest Ice Cream flavor. More than 1600 Wisconsin 4-H clubs are eligible to create and submit a flavor 'recipe' with the top clubs named as finalists and the top flavor produced for summer 2017.

Information and the application will be available in the upcoming weeks on the Foundation's website, [www.Wis4HFoundation.org](http://www.Wis4HFoundation.org). Or, feel free to contact the Foundation at (608) 262-1597 or [info@Wis4HFoundation.org](mailto:info@Wis4HFoundation.org).

According to Brenda Scheider, Director of the Wisconsin 4-H Foundation, the Create an Ice Cream Flavor contest is a great opportunity for 4-H youth to work together to develop and name their flavor. "The most exciting part of the contest is the winning flavor will be available through Cedar Crest beginning next June."

Scheider credited Kay Schmit, Marketing Manager at Cedar Crest Ice Cream, for the creative idea, which already yielded popular flavors including Deep Space, the 2015 flavor contest winner. Deep Space was developed by the Badger Boosters 4-H Club in West Bend, Wisconsin.

Entries will be judged by a panel of ice cream experts chosen by Cedar Crest's staff. Cedar Crest manufacturers more than 80 flavors of ice cream at its Manitowoc, Wisconsin, plant, and distributes products in five states. Many of the flavors now produced by Cedar Crest Ice Cream, like Shipwreck and Elephant Tracks, came into existence via prior flavor competitions.

## The 64<sup>th</sup> Annual Spooner Sheep Day Saturday, August 27, 2016

The 64<sup>th</sup> Annual Spooner Sheep Day will be held at the Spooner Agricultural Research Station on **Saturday, August 27, 2016**. Registration will open at 8:30 a.m. at the Station Headquarters (W6646 Hwy 70, Spooner, WI 54801). The educational program will start at 9:15 a.m. and end at approximately 3:30 p.m.

It is very likely that the 2016 event will be the last Spooner Sheep Day because the sheep are to be sold in October 2016 due to severe budget cuts to the UW System. The Spooner Agricultural Research Station was established in 1908 and is the oldest of the several agricultural research stations operated throughout Wisconsin by the College of Agricultural and Life Sciences (CAL S) at the University of Wisconsin-Madison. Sheep were introduced to the Spooner Station in 1936 and the first sheep field day was held in 1953. The Spooner Sheep Day is thought to be the longest-running agricultural field day of the several held each year by CAL S.

Check in the near future for a complete schedule at the UW-Madison Sheep and Goat Extension Web Site: <http://fyi.uwex.edu/wisheepandgoat/> or the web site of the Spooner Ag Research Station: <http://spooner.ars.wisc.edu/>, or contact Lorraine Toman at the Spooner Agricultural Research Station ([spooner@cals.wisc.edu](mailto:spooner@cals.wisc.edu), 715-635-3735) or Dave Thomas at UW-Madison ([dltthomas@wisc.edu](mailto:dltthomas@wisc.edu), 608-263-4306) for additional information.

**IMPORTANT: Pre-Registration Required** - Pre-registration for this event is **required** with a deadline of August 19, 2016. Contact Lorraine Toman at the Spooner Agricultural Research Station at 715-635-3735 or [spooner@cals.wisc.edu](mailto:spooner@cals.wisc.edu) to register. Space may be limited. Attendance at the educational sessions is free, but a nominal fee will be charged for a delicious lamb lunch.

## AVIAN QUIZ BOWL September 24, 2016



The Quiz Bowl competition will be held on September 24 at the Columbia County Fairgrounds in Portage, WI. TIME TBD, approximately. 2 pm.

The Avian Quiz Bowl will consist of three- or four-member teams. Teams will be quizzed on various aspects of poultry and eggs from hatching to management to cooking, competing against other teams in a game show format.

There will be both a junior (under 14 yr.) and senior (14-18 yr.) division. Senior division winners will represent the State of Wisconsin at the 4-H National Poultry & Egg Conference held in Louisville, KY. Participants must be 4-H members.

For more information, or to register, contact: **Ron Kean, 1675 Observatory Dr. Madison, WI 53706, 608/262-8807 [rpkean@wisc.edu](mailto:rpkean@wisc.edu)**.

## National 4-H Dairy Conference – Applications Due July 15th

Applications are now available for youth wanting to attend the National 4-H Dairy Conference. Each year about 200 youth who participate in 4-H dairy projects across the U.S. and Canada congregate in Madison, WI for the National 4-H Dairy Conference which is held annually in conjunction with World Dairy Expo. This year the conference will be held **October 2 – 6, 2016**. Participants learn about dairy production, dairy food processing, marketing and use of dairy products, and develop a broader understanding of careers available in the dairy industry.

### Eligibility/Basis of Selection:

Wisconsin's Youth Delegates will be selected from outstanding 4-H Dairy Program members who:

- Have participated at least three years in the 4-H Dairy Program, including the current year.
- Must be in 10-12 grade as of January 1 of the current year with a maximum age of 18 as of January 1 of the current year.
- Have outstanding records of 4-H Dairy accomplishments.
- Have abilities and talents, which will enable them to make a real contribution to the conference.
- Have an interest in the production, marketing, processing and use of dairy products.
- Are capable of bringing the inspiration and information back to their state and passing it on to others through talks, reports, news stories, etc.
- Have not previously attended the National 4-H Dairy Conference.
- Are not exhibiting dairy animals at this year's World Dairy Expo.
- Are not participating in this year's National 4-H Dairy Cattle Judging Contest.

Delegates for Wisconsin will be selected based upon the information provided in this application. If necessary, interviews may be conducted to aid in the selection process. State funds will be used to cover a portion of the conference fee and the cost to Wisconsin youth selected to attend the conference will be \$175 (this is subject to change from year to year). Youth selected to attend the conference are encouraged to seek scholarship funds from local committees, companies and organizations to help cover their cost.

The 2016 National 4-H Dairy Conference will be held from October 2 -6. If you would like to attend this conference as a delegate for Wisconsin please fill out the form found at <http://fyi.uwex.edu/dairyouth/dairy-events/national-4-h-dairy-conference/> In addition to filling out this form, you must have a letter of recommendation written by your 4-H Dairy Project Leader or your County 4-H Youth Development Agent explaining why you should be considered as a delegate to this conference. The letter can be mailed or emailed directly to: **Beth Heinze, Extension Dairy Youth Specialist, 1675 Observatory Drive, Room 275, Madison, WI 53706** [heinze2@wisc.edu](mailto:heinze2@wisc.edu) Phone: 608-263-9409.

## 4-H Record Books/Secretary Books Due September 1st

Why do we ask EVERY member to fill out a record book? What do you get out of them? Why do the 4-H leaders want to see them? Your 4-H Record Book is a great way for you to show others what you were able to accomplish throughout the past year.



Maybe you don't think you really accomplished anything, but what about learning how to show a pig for the first time, sewing an entire project without ripping out a single seam, or participating in shooting sports events. Even though it may not seem like a huge accomplishment to you, it is still something that you should be proud of. Record books are also the way that the 4-H Leaders Association uses to recognize 4-H members. They also serve as a great reference for the future.

## ME Forms Due September 1st

ME Forms or Member Evaluation forms could be your ticket across the country. Older youth, **grades 7-13**, are HIGHLY encouraged to apply for numerous trips with 80% of the cost funded by the 4-H Leaders Association. This is a great opportunity for youth to enhance their interview skills.

## Kids' Quilt Challenge

Youth ages 15 and under are invited to enter their quilts in this year's Kids' Quilt Challenge. The contest is part of the annual, award-winning Quilt Expo presented by Wisconsin Public Television and Nancy Zieman Productions. Quilt Expo will be held Thursday, Sept. 8 through Saturday, Sept. 10 in the Exhibition Hall at the Alliant Energy Center in Madison.

The Kids' Quilt Challenge, sponsored by Nancy Zieman Productions award gift certificates to the top three quilts - a \$200 certificate for first place, \$100 for second place and \$50 for third place.

You can find the [2016 Kids' Quilt Contest Rules & Entry Form](#) (PDF) here.

Entries must be received by Aug. 19.

For more information, contact Deanna Springer, 920-356-9506.





Marquette County Fair  
 July 7-10, 2016  
 THEME: SUMMERTIME FUN!

### 2016 4-H Food Stand Schedule

Marquette County 4-H events are funded through the income generated at the 4-H Food Stand. Each 4-H member/family is asked to work at least one shift during the fair. If you are not able to work during your club's assigned shift....please make arrangements to work when you are available.

#### THURSDAY, JULY 7

10:00a.m. – 2:30p.m.	Douglas Doers
2:30p.m. – 7:00p.m.	Springfield Fun Runners
7:00p.m. – 11:00p.m.	Springfield Fun Runners

#### FRIDAY, JULY 8

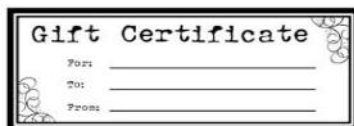
10:00a.m. – 2:30p.m.	Douglas Doers
2:30p.m. – 7:00p.m.	Russell Flats
7:00p.m. – 11:00p.m.	Russell Flats and Trip Winners

#### SATURDAY, JULY 9

10:00a.m. – 2:30p.m.	Badger
2:30p.m. – 7:00p.m.	Badger
7:00p.m. – 11:00p.m.	Douglas Doers and Badger

#### SUNDAY, JULY 10

10:00a.m. – 12:00p.m.	Explore Wisconsin/Trip Winners
12:00p.m. – 2:00p.m.	4-H Alumni ?
2:00p.m. – 4:00p.m.	Oxford Record Makers

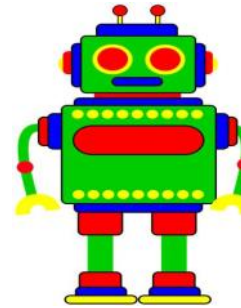


Purchase gift certificates for the Marquette County 4-H Food Stand prior to the fair at the UW-Extension Office. Certificates are available in \$5 increments. Certificates will also be available during the fair from the 4-H Food Stand.

### Fair Entries

You can add to your fair entry form until July 1st!  
 Premium books can be found at: <http://www.marquettecountyfairwi.org/>.

### Lego Robotics Drop-In Center



Once again, there will be the Lego Robotics Drop-In center. This is a free event and will be held from 1-4pm on Thursday, July 7th and again on Saturday, July 9th from 1-4pm. These events will be held in the Exhibit Building. Youth are encouraged to stop in at any time and learn about this popular activity. After attending the Lego Robotics Drop-In Center, youth will know how to transform ordinary Legos from a simple toy into an object that can talk and move!

Following the completion of the Lego Robotics Drop-In Center, there will be a demonstration on the stage in the Exhibit Building on Thursday, July 7th. This demonstration will explain the mechanics that go into creating a robot out of Legos. This demonstration will begin at 4pm. Not only will there be an explanation of the process, but there may also be some samples available to view that youth have created. This demonstration will completely change how you view this ordinary children's toy.

### #Spillthebeans Video Contest

Members of Wisconsin 4-H and FFA grades 3-13 (as of January 1, 2016) are encouraged to participate in a new video contest opportunity highlighting the importance of soybeans in livestock projects. Winners can earn cash awards and be recognized at the 2016 Wisconsin State Fair! Get your smartphone, video camera or tablet ready and enter a two - minute (or less) video that addresses one of the following topics that revolve on the importance of soybeans in Wisconsin. Over \$2000 of award money is up for grabs! Can't wait to see what you create! Check out the link below to see how you can submit your video.



<http://fyi.uwex.edu/youthlivestock/spillthebeans-video-contest/>.